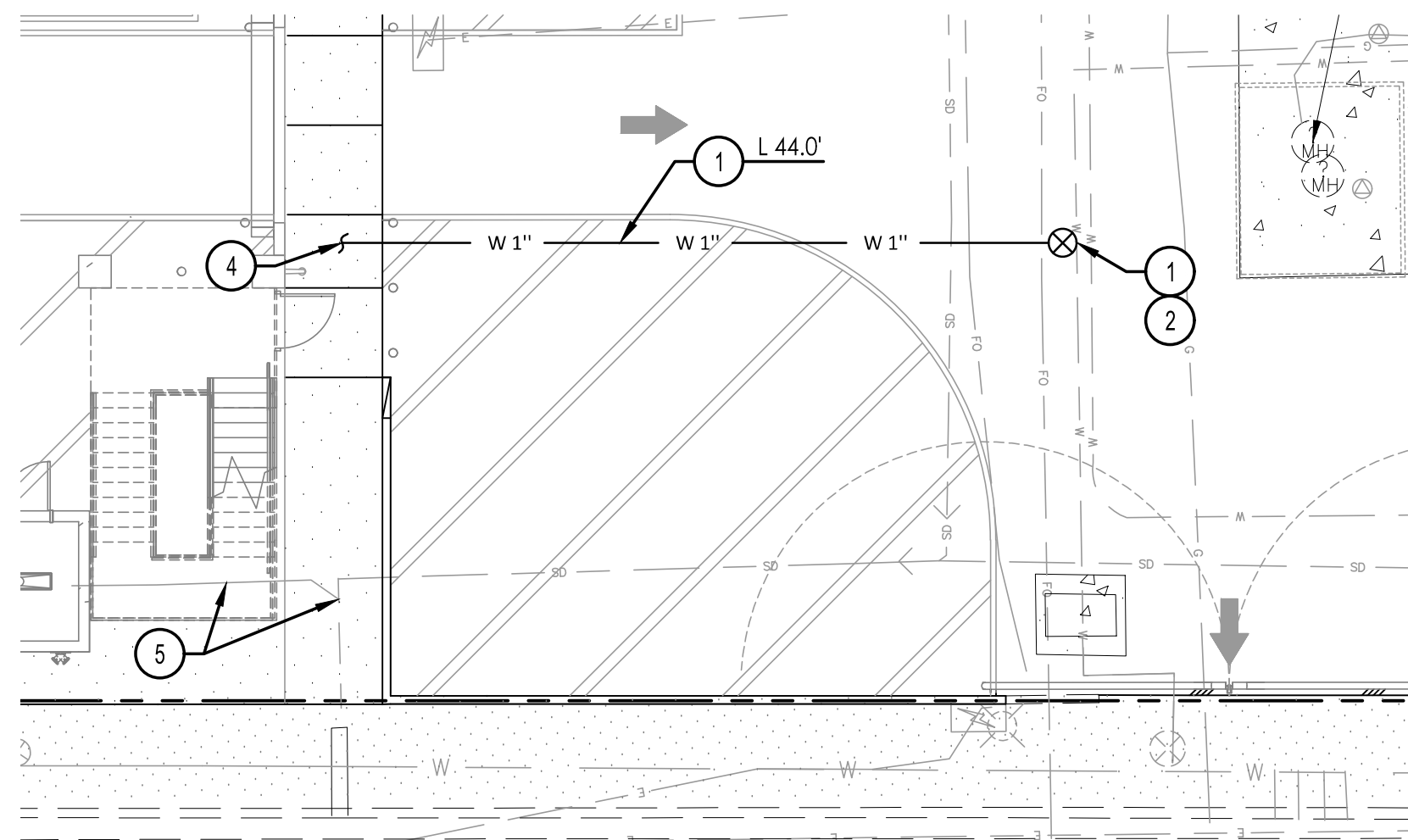


**UTILITY KEYNOTES**

- CONTRACTOR TO LOCATE THE EXIST. 3" WATERLINE, CUT AND INSTALL A NEW 3"x1" TEE
- INSTALL NEW 1" BALL VALVE CURB STOP WITH VALVE, BOX AND COVER PER MAG STD DTL 391-2
- INSTALL NEW 1" TYPE 'K' COPPER PIPE, 36" MIN COVER, LENGTH PER PLAN
- CONNECT 1" WATER LINE TO BUILDING PLUMBING CONTRACTOR TO LOCATE EXIST. STORM DRAIN LINE AND CAP LINE RUNNING TO THE WEST BELOW GRADE AT THE WYE CONNECTION. THE LINE RUNNING EAST IS TO REMAIN IN PLACE AND IN OPERATION



**PRIVATE UTILITY DETAIL**  
SCALE - 1"=10'

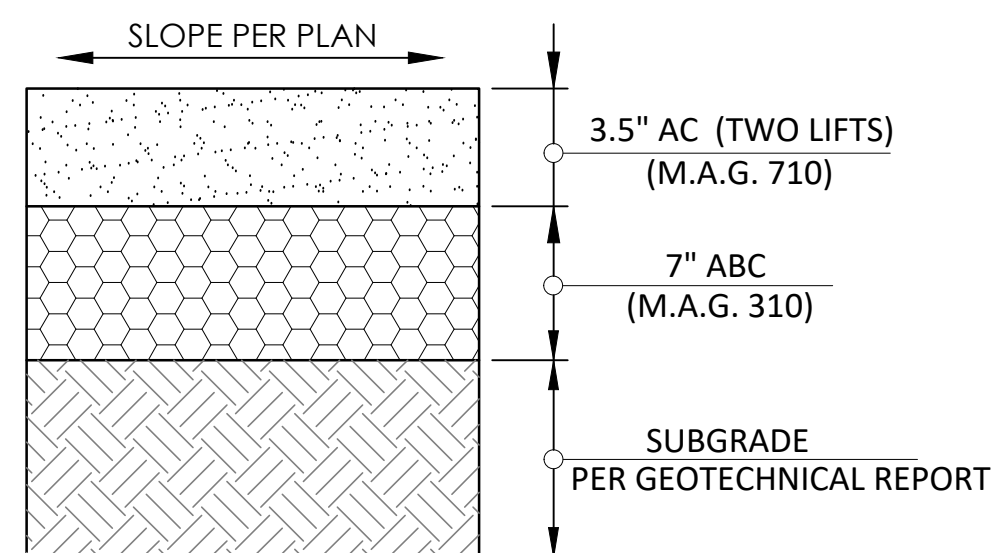
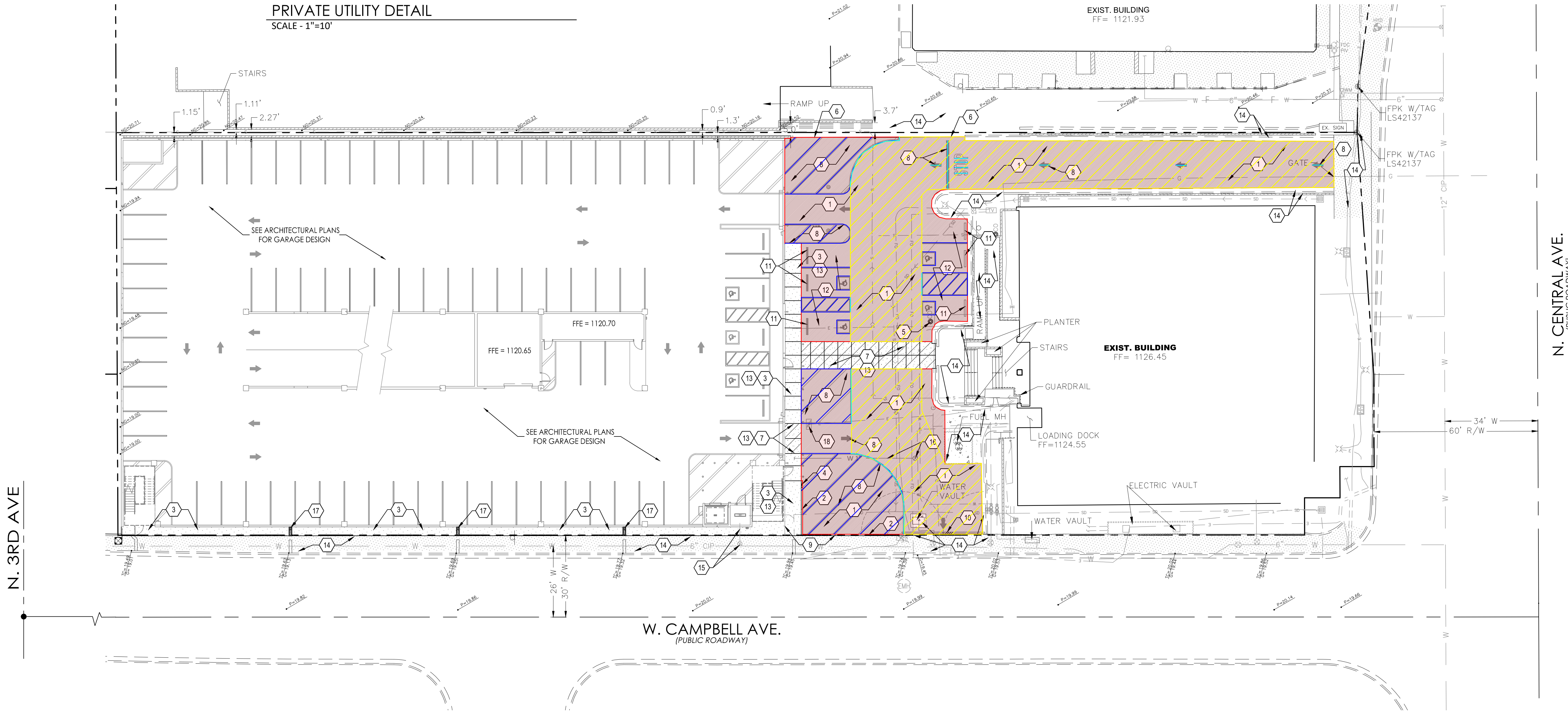
**PAVING LEGEND**

- INSTALL ASPHALT PAVEMENT (3.5" ASPHALT OVER 7" ABC) OVER PREPARED SUBGRADE PER GEOTECHNICAL REPORT.
- INSTALL CONCRETE SIDEWALK PER MAG STD DTL 230
- INSTALL CONCRETE SECTION (7.5" PCC) OVER PREPARED SUBGRADE PER GEOTECHNICAL REPORT.

Legend		
Description	Quantity	Unit
ADJ Ways - Asphalt Paving	6,251.55	sf
ADJ Ways - Striping	157.6349	ft
Total - Asphalt Paving	10,357.83	sf
Total - Striping	873.5295	ft

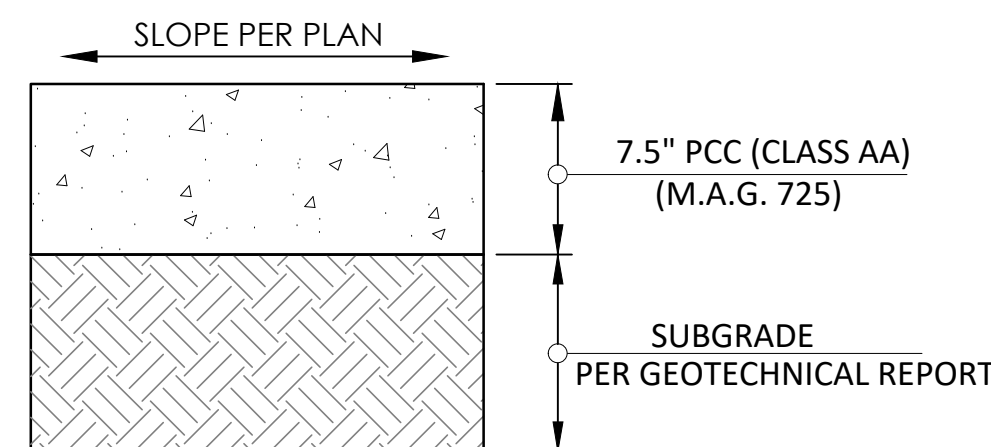
**PAVING CONSTRUCTION NOTES**

- INSTALL ASPHALT PAVEMENT (3.5" ASPHALT OVER 7" ABC) OVER PREPARED SUBGRADE PER GEOTECHNICAL REPORT. SEE DTL #1 THIS SHIT
- INSTALL SINGLE CURB PER MAG STD DTL 222, TYPE B
- INSTALL CONCRETE SIDEWALK PER MAG STD DTL 230
- INSTALL TYPICAL CURB TERMINATION PER MAG STD DTL 222
- ADJUST EXIST SEWER CLEANOUT FRAME AND COVER PER MAG STD DTL 441
- INSTALL ASPHALT PAVEMENT EDGE, TYPE 'A' PER MAG STD DTL 201
- INSTALL CLASS AA CONCRETE PAVEMENT (7.5" PCCP) OVER PREPARED SUBGRADE PER GEOTECHNICAL REPORT. SEE DTL #2 THIS SHIT
- INSTALL NEW PAVEMENT STRIPING AND SYMBOLS PER ARCHITECTURAL DETAILS AND SPECIFICATIONS. TYPICAL FOR ALL SITE STRIPING
- INSTALL NEW SCREEN FENCE PER ARCHITECTURAL DETAILS
- INSTALL NEW SWINGING GATE PER ARCHITECTURAL DETAILS
- INSTALL NEW CONCRETE SAFETY CURB PER ARCHITECTURAL DETAILS
- INSTALL ADA STRIPING PER ARCHITECTURAL DETAILS AND SPECIFICATIONS
- ADA PATH, VERIFY ALL SLOPES ARE COMPLIANT BEFORE CONCRETE POURS
- EXISTING IMPROVEMENTS, PROTECT IN PLACE
- NEW FIRE LINE PER FIRE LINE PLAN, A SEPARATE PERMIT
- NEW WATERLINE PER PRIVATE UTILITY DTL THIS SHIT
- NEW SCUPPER PER GRADING PLAN
- ADJUST EXIST ELECTRICAL BOX TO FINISHED GRADE

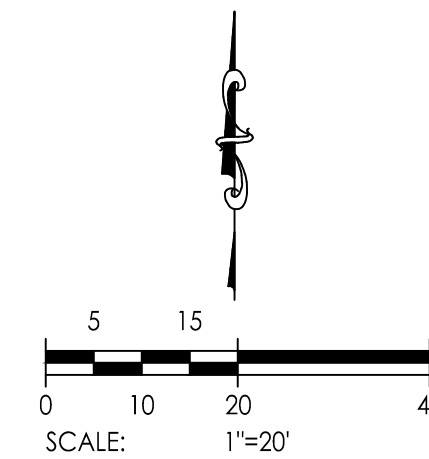


**1 ASPHALT SECTION (3.5"/7")**  
N.T.S.

**NOTE:**  
PAVING SECTION INFORMATION PROVIDED FOR REFERENCE ONLY. CONTRACTOR TO REVIEW "GEOTECHNICAL EXPLORATION REPORT AND ADDENDUM #2 PREPARED FOR PHOENIX UNION PARKING GARAGE AND CHASSE BUILDING TEAM BY VAN ENGINEERING INC. - PROJECT NUMBER 32693, REPORT DATED - APRIL 15TH, 2025 AND ADDENDUM #2 DATED - SEPT. 23, 2025."



**2 CONCRETE SECTION (7.5")**  
N.T.S.



**KBELL ENGINEERING**  
1355 N 86TH PLACE MESA, ARIZONA 85207  
PH: 602.980.8246 Copyright © 2025



THE LOCATION OF EXISTING UNDERGROUND UTILITIES ARE SHOWN IN AN APPROXIMATE WAY ONLY. THE CONTRACTOR SHALL DETERMINE THE EXACT LOCATION OF ALL EXISTING UTILITIES BEFORE COMMENCING WORK. HE AGREES TO BE FULLY RESPONSIBLE FOR ANY AND ALL DAMAGES WHICH MIGHT BE OCCASIONED BY HIS FAILURE TO EXACTLY LOCATE AND PRESERVE ANY AND ALL UNDERGROUND UTILITIES.



**DFDG Architecture**  
4545 E. McKinley St. Phoenix, AZ 85008  
602.954.9060 www.dfdg.com



**PROJECT TEAM**  
Owner: Phoenix Union High School District  
Contractor: Chasse Building Team  
Associate Architect: DFDG Architecture  
Structural Engineer: Landa and Associates  
Mechanical & Plumbing Engineer: Kennelly Engineering  
Electrical Engineer: Bowie Tiglas Engineering  
Civil Engineer: KBell Engineering

**DOCUMENT COPYRIGHT 2025**  
**ISSUE**  
SD Package - 07.17.25  
50% - 08.26.25  
Plan Submittal - 10.01.25

**REVISIONS**

**PROJECT TITLE**  
4502 Parking Structure

4502 N. Central Ave.  
Phoenix, AZ 85012

25001  
DFDG PROJECT NUMBER

**SHEET**  
PAVING PLAN

**C102**